

1.2 Drag Clamp



The Thomson Engineering Drag Clamp has a unique cam action rail gripping system which tightens its grip on the rail the harder you pull.

Massive, all-steel construction ensures that the Thomson Drag Clamp is tough enough for the job.

Large bearing areas and soft surfaces where the drag clamp grips the rail prevent damage to the rail in use.

The cam surfaces can be rotated six times to give a very long life indeed.



Features

- Lightweight & Compact
- Cam Mechanism
- Can be supplied with chain
- High Strength
- All Steel Construction
- High Resistance to Dynamic Loads
- High Resistance to Abuse
- Proven in Use Since 2007
- 22,000 lb Max Tow Load
- Fits CEN60 and BS113 Rail
- Full Factory Parts Backup
- CE Marked

A ROBUST, EASY TO USE DRAG CLAMP, SMALL ENOUGH TO FIT THE TOOLBOX OF MOST RRV's

Specifications

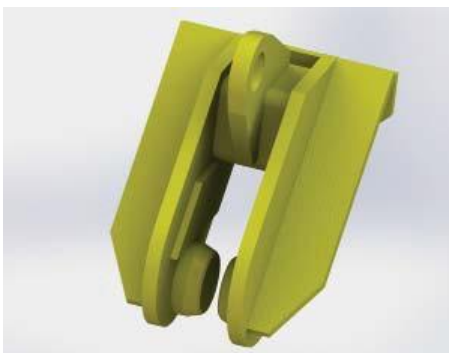
Weight		99
lbs	Rated	Pull
22,000	lbf Proof Load (Factory test)	
44,000	lbf	Mechanism
Cam	type	Construction
Rigid	All Steel	Body
08E51	Yellow	Colour

Options

Can be supplied with tow chain and / or shear link

Documentation

Operator's Manual
Parts Manual
Maintenance Plan
Factory Test Certificate



Benefits

Cam mechanism means no linkage to stick.

Secure grip on rail.

No moving parts to jam or fail.



Specifications given may be subject to change due to our policy of continuous improvement